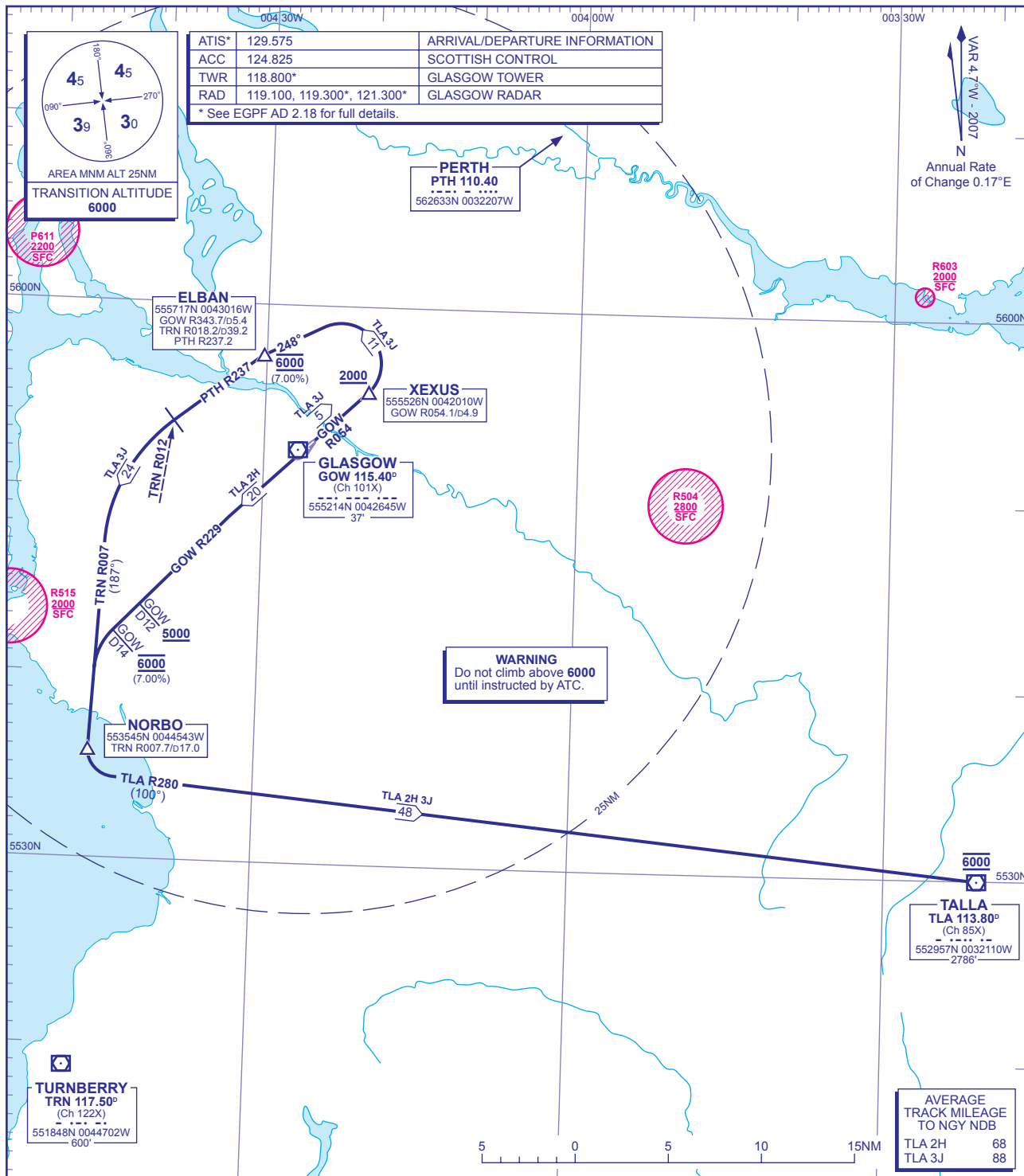


STANDARD DEPARTURE CHART - INSTRUMENT (SID) - ICAO

DISTANCES IN NAUTICAL MILES
BEARINGS, TRACKS AND RADIALS ARE MAGNETIC
ALTITUDES AND ELEVATIONS ARE IN FEET

GLASGOW TALLA (Jet aircraft only)



ATIS*	129.575	ARRIVAL/DEPARTURE INFORMATION
ACC	124.825	SCOTTISH CONTROL
TWR	118.800*	GLASGOW TOWER
RAD	119.100, 119.300*, 121.300*	GLASGOW RADAR

* See EGPF AD 2.18 for full details.

VAR 4°W - 2007
N
Annual Rate of Change 0.17°E

WARNING
Do not climb above 6000 until instructed by ATC.

TALLA
TLA 113.80°
(Ch 85X)
552957N 0032110W
-2786'

AVERAGE TRACK MILEAGE TO NDB	
TLA 2H	68
TLA 3J	88

TLA 2H RWY 23	Climb straight ahead to intercept GOW VOR R229. Crossing GOW D12 at 5000 or above. Cross GOW D14 at 6000 then turn left onto TRN VOR R007 to NORBO. At NORBO (TRN VOR R007 D17), turn left onto TLA VOR R280 to cross TLA VOR at 6000.	Jet aircraft leaving controlled airspace via TLA VOR L602, UL602.
OBSTACLE CLEARANCE - RWY 23: Maintain minimum 3.8% climb to 1200.		
TLA 3J RWY 05	Climb straight ahead to intercept GOW VOR R054. Crossing GOW D4.9 (XEXUS) at 2000 or above then turn left onto track 248° to ELBAN (TRN VOR R018). Crossing ELBAN at 6000 (7%), intercept PTH VOR R237. At TRN VOR R012 turn left onto TRN VOR R007 to NORBO. At NORBO (TRN VOR R007 D17), turn left onto TLA VOR R280 to cross TLA VOR at 6000.	
OBSTACLE CLEARANCE - RWY 05: Maintain minimum 4.5% climb to 1500.		

- GENERAL INFORMATION**
- SIDs reflect Noise Preferential Routeings. See EGPF AD 2.21 for Noise Abatement Procedures.
 - Initial climb straight ahead to 526 QNH (500 QFE).
 - Climb gradients greater than 3.3% are required for obstacle clearance purposes, as indicated. In addition climb gradients greater than those necessary for obstacle clearance are required for ATC and airspace requirements as indicated.
 - En-route cruising levels will be issued after take-off by 'Scottish Control'. Report callsign, SID designator, current altitude and cleared altitude on first contact with 'Scottish Control'.
 - Maximum IAS 250KT below FL100 unless otherwise authorised.

CHANGE: CALLSIGN CORRECTED.

AERO INFO DATE 30 OCT 07