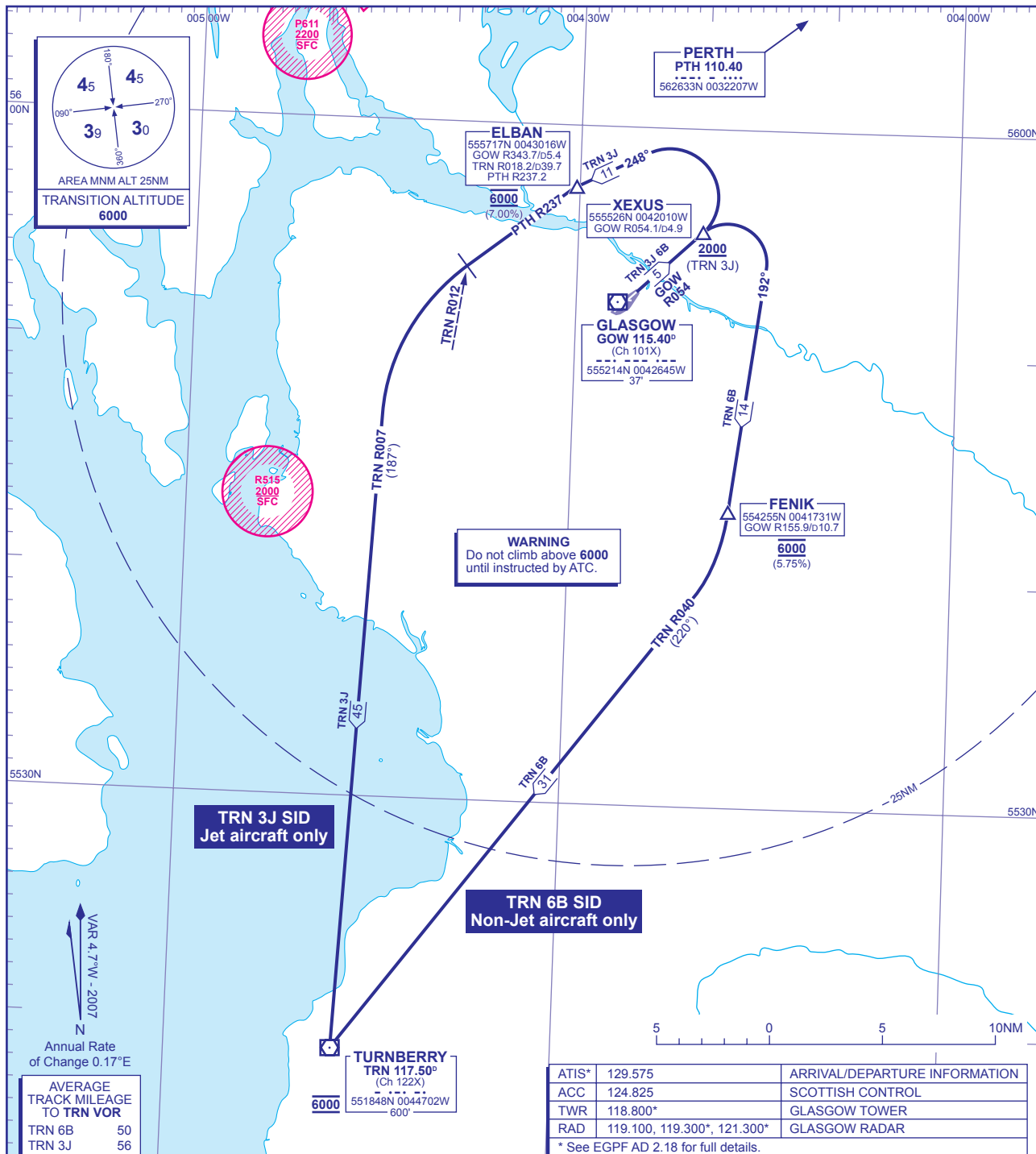


**STANDARD DEPARTURE CHART - INSTRUMENT (SID) - ICAO**

DISTANCES IN NAUTICAL MILES  
BEARINGS, TRACKS AND RADIALS ARE MAGNETIC  
ALTITUDES AND ELEVATIONS ARE IN FEET

**GLASGOW TURNBERRY RWY 05**



ATIS*	129.575	ARRIVAL/DEPARTURE INFORMATION
ACC	124.825	SCOTTISH CONTROL
TWR	118.800*	GLASGOW TOWER
RAD	119.100, 119.300*, 121.300*	GLASGOW RADAR

\* See EGPF AD 2.18 for full details.

**TRN 6B RWY 05 Non-Jet ACFT only** Climb straight ahead to intercept GOW VOR R054. At GOW D4.9 (XEXUS) turn right onto track 192°M to FENIK, crossing FENIK at 6000 (5.75%), to intercept TRN VOR R040 to TRN VOR at 6000. P600 westbound, OAC Routes via 53N & 54N.

**OBSTACLE CLEARANCE -** Maintain minimum 4.5% climb to 300.

**TRN 3J RWY 05 Jet ACFT only** Climb straight ahead to intercept GOW VOR R054. Crossing GOW D4.9 (XEXUS) at 2000 or above, then turn left onto track 248°M to ELBAN (TRN VOR R018), crossing ELBAN at 6000 (7%), to intercept PTH VOR R237. At TRN VOR R012 turn left onto TRN VOR R007 to TRN VOR at 6000. P600 westbound, OAC Routes via 53N & 54N.

**OBSTACLE CLEARANCE -** Maintain minimum 4.5% climb to 1500.

- GENERAL INFORMATION**
- SIDs reflect Noise Preferential Routeings. See EGPF AD 2.21 for Noise Abatement Procedures.
  - Initial climb straight ahead to 526 QNH (500 QFE).
  - Climb gradients greater than 3.3% are required for obstacle clearance purposes, as indicated. In addition climb gradients greater than those necessary for obstacle clearance are required for ATC and airspace requirements as indicated.
  - En-route cruising levels will be issued after take-off by 'Scottish Control'. Report callsign, SID designator, current altitude and cleared altitude on first contact with 'Scottish Control'.
  - Maximum IAS 250KT below FL100 unless otherwise authorised.

**CHANGE: CALLSIGN CORRECTED.**

AERO INFO DATE 30 OCT 07