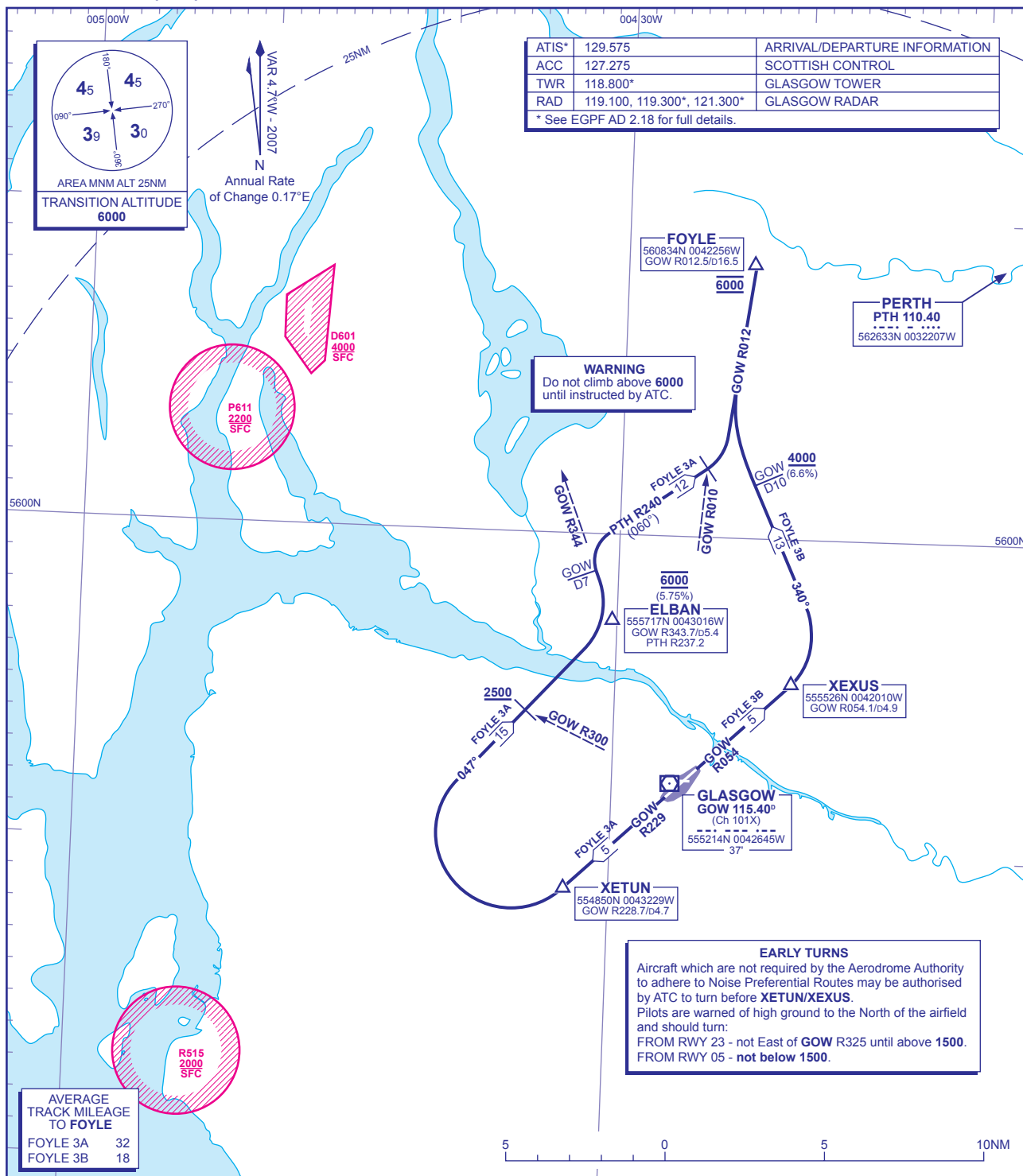


**STANDARD DEPARTURE CHART - INSTRUMENT (SID) - ICAO**

DISTANCES IN NAUTICAL MILES  
BEARINGS, TRACKS AND RADIALS ARE MAGNETIC  
ALTITUDES AND ELEVATIONS ARE IN FEET

**GLASGOW FOYLE**



FOYLE 3A RWY 23	Climb straight ahead to intercept GOW VOR R229. At GOW D4.7 (XETUN) turn right onto track 047°M towards ELBAN, crossing GOW VOR R300 at 2500 or above. Cross ELBAN at 6000 (5.75%), intercepting GOW VOR R344. At GOW D7 turn right onto PTH VOR R240. At GOW VOR R010 turn left onto GOW VOR R012 to FOYLE at 6000.	N560D.
FOYLE 3B RWY 05	Climb straight ahead to intercept GOW VOR R054. At GOW D4.9 (XEXUS) turn left onto track 340°M, crossing GOW D10 at 4000 or above (6.6%), to intercept GOW VOR R012 to FOYLE at 6000.	N560D.
<b>OBSTACLE CLEARANCE - RWY 23: Maintain minimum 3.8% climb to 2100.</b>		
<b>OBSTACLE CLEARANCE - RWY 05: Maintain minimum 4.5% climb to 1500.</b>		

- GENERAL INFORMATION**
- SIDs reflect Noise Preferential Routeings. See EGPF AD 2.21 for Noise Abatement Procedures.
  - Initial climb straight ahead to 526 QNH (500 QFE).
  - Climb gradients greater than 3.3% are required for obstacle clearance purposes, as indicated. In addition climb gradients greater than those necessary for obstacle clearance are required for ATC and airspace requirements as indicated.
  - En-route cruising levels will be issued after take-off by 'Scottish Control'. Report callsign, SID designator, current altitude and cleared altitude on first contact with 'Scottish Control'.
  - Maximum IAS 250KT below FL100 unless otherwise authorised.

**CHANGE: CALLSIGN CORRECTED.**

AERO INFO DATE 30 OCT 07