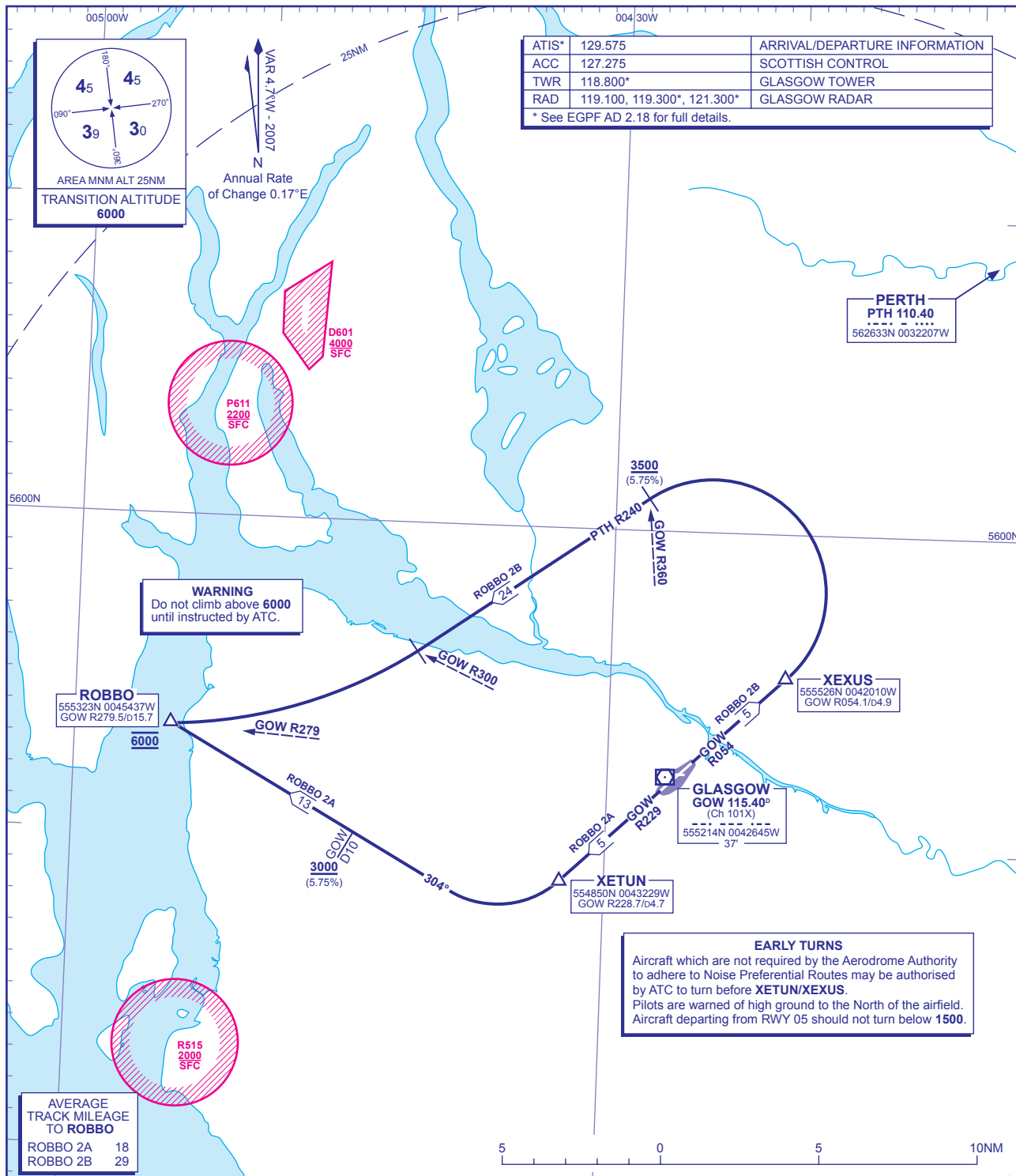


STANDARD DEPARTURE CHART - INSTRUMENT (SID) - ICAO

DISTANCES IN NAUTICAL MILES
BEARINGS, TRACKS AND RADIALS ARE MAGNETIC
ALTITUDES AND ELEVATIONS ARE IN FEET

GLASGOW ROBBO



AVERAGE TRACK MILEAGE TO ROBBO	
ROBBO 2A	18
ROBBO 2B	29

ROBBO 2A RWY 23	Climb straight ahead to intercept GOW VOR R229. At GOW D4.7 (XETUN) turn right onto track 304°M crossing GOW D10 at 3000 or above (5.75%), to ROBBO at 6000.	OAC Routes via NIBOG, MIMKU (FIR).
OBSTACLE CLEARANCE - RWY 23: Maintain minimum 3.8% climb to 2100.		
ROBBO 2B RWY 05	Climb straight ahead to intercept GOW VOR R054. At GOW D4.9 (XEXUS) turn left onto PTH VOR R240, crossing GOW VOR R360 at 3500 or above (5.75%), to ROBBO at 6000.	OAC Routes via NIBOG, MIMKU (FIR).
OBSTACLE CLEARANCE - RWY 05: Maintain minimum 4.5% climb to 1500.		

- GENERAL INFORMATION**
- SIDs reflect Noise Preferential Routeings. See EGPF AD 2.21 for Noise Abatement Procedures.
 - Initial climb straight ahead to 526 QNH (500 QFE).
 - Climb gradients greater than 3.3% are required for obstacle clearance purposes, as indicated. In addition climb gradients greater than those necessary for obstacle clearance are required for ATC and airspace requirements as indicated.
 - En-route cruising levels will be issued after take-off by 'Scottish Control'. Report callsign, SID designator, current altitude and cleared altitude on first contact with 'Scottish Control'.
 - Maximum IAS 250KT below FL100 unless otherwise authorised.

CHANGE: CALLSIGN CORRECTED.

AERO INFO DATE 30 OCT 07