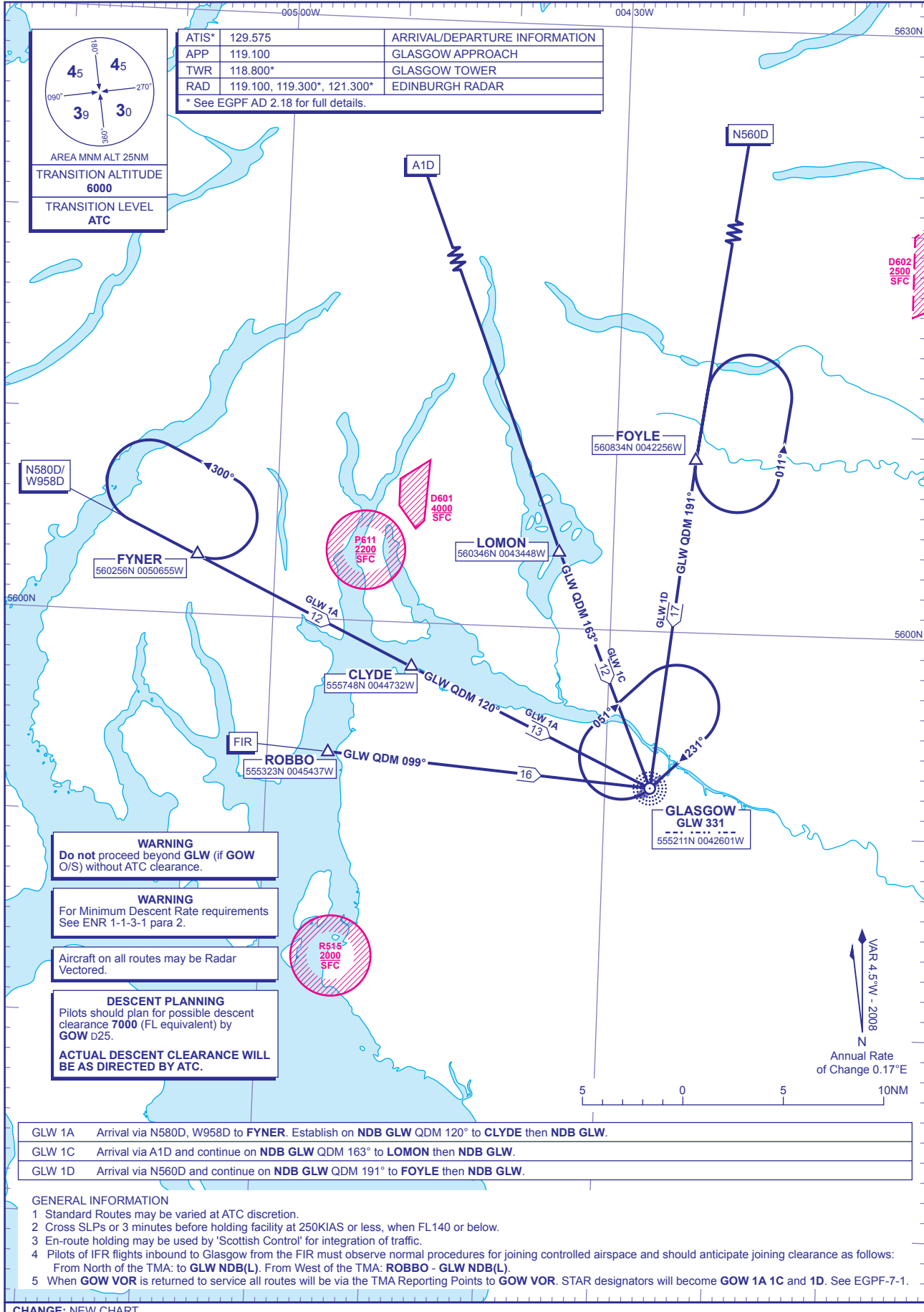


STANDARD ARRIVAL CHART - INSTRUMENT (STAR) - ICAO

DISTANCES IN NAUTICAL MILES
BEARINGS, TRACKS AND RADIALS ARE MAGNETIC
ALTITUDES AND ELEVATIONS ARE IN FEET

GLASGOW
via **GLW NDB(L) VOR GOW** u/s



GLW 1A	Arrival via N580D, W958D to FYNER. Establish on NDB GLW QDM 120° to CLYDE then NDB GLW.
GLW 1C	Arrival via A1D and continue on NDB GLW QDM 163° to LOMON then NDB GLW.
GLW 1D	Arrival via N560D and continue on NDB GLW QDM 191° to FOYLE then NDB GLW.

GENERAL INFORMATION

- Standard Routes may be varied at ATC discretion.
- Cross SLPs or 3 minutes before holding facility at 250KIAS or less, when FL140 or below.
- En-route holding may be used by 'Scottish Control' for integration of traffic.
- Pilots of IFR flights inbound to Glasgow from the FIR must observe normal procedures for joining controlled airspace and should anticipate joining clearance as follows:
From North of the TMA: to **GLW NDB(L)**. From West of the TMA: **ROBBO - GLW NDB(L)**.
- When **GOW VOR** is returned to service all routes will be via the TMA Reporting Points to **GOW VOR**. STAR designators will become **GOW 1A 1C** and **1D**. See EGPF-7-1.

CHANGE: NEW CHART.
AERO INFO DATE 26 MAR 08