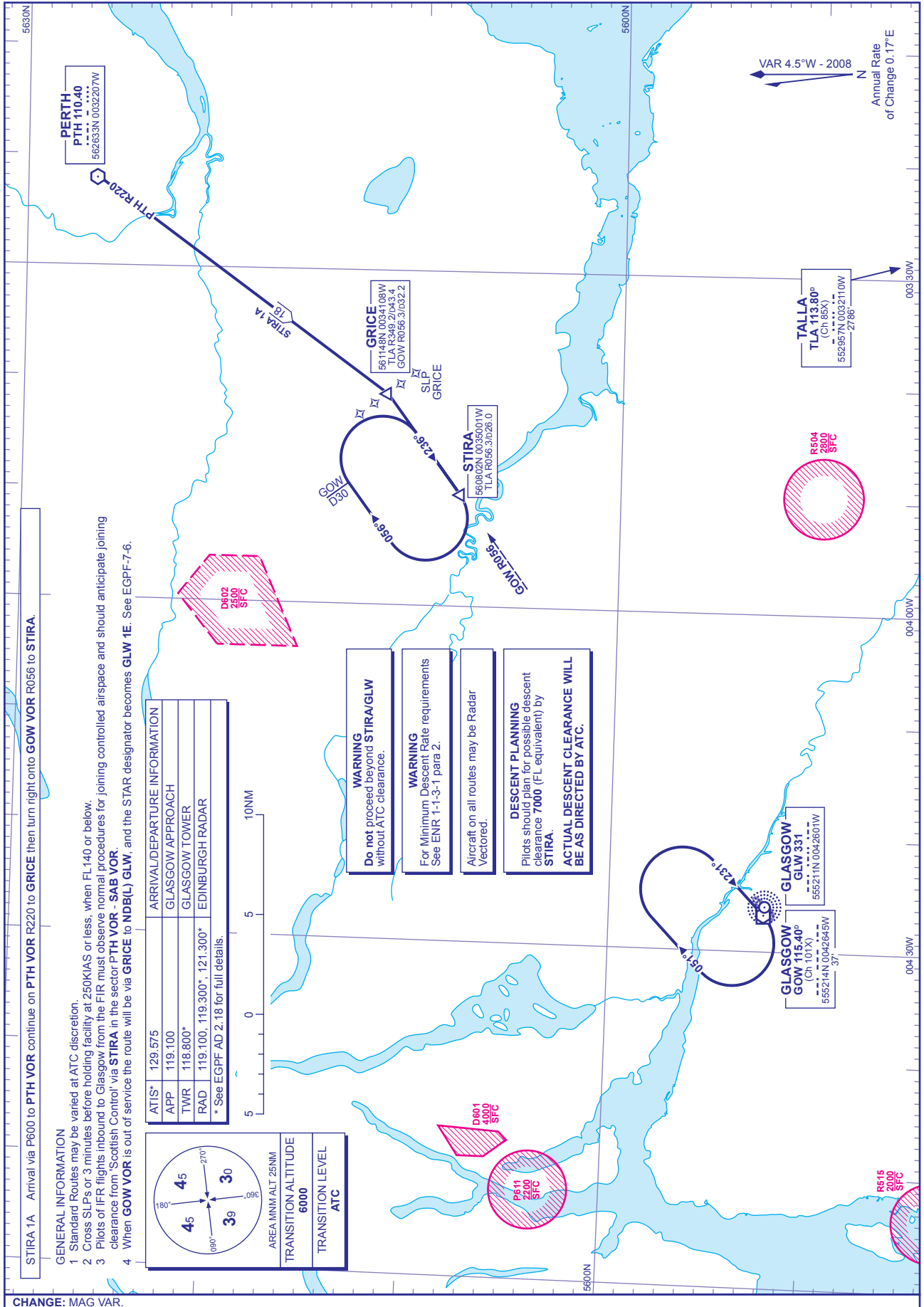


**STANDARD ARRIVAL CHART - INSTRUMENT (STAR) - ICAO**

DISTANCES IN NAUTICAL MILES  
BEARINGS, TRACKS AND RADIALS ARE MAGNETIC  
ALTITUDES AND ELEVATIONS ARE IN FEET

**GLASGOW via STIRA**



CHANGE: MAG VAR.

AERO INFO DATE 28 MAR 08