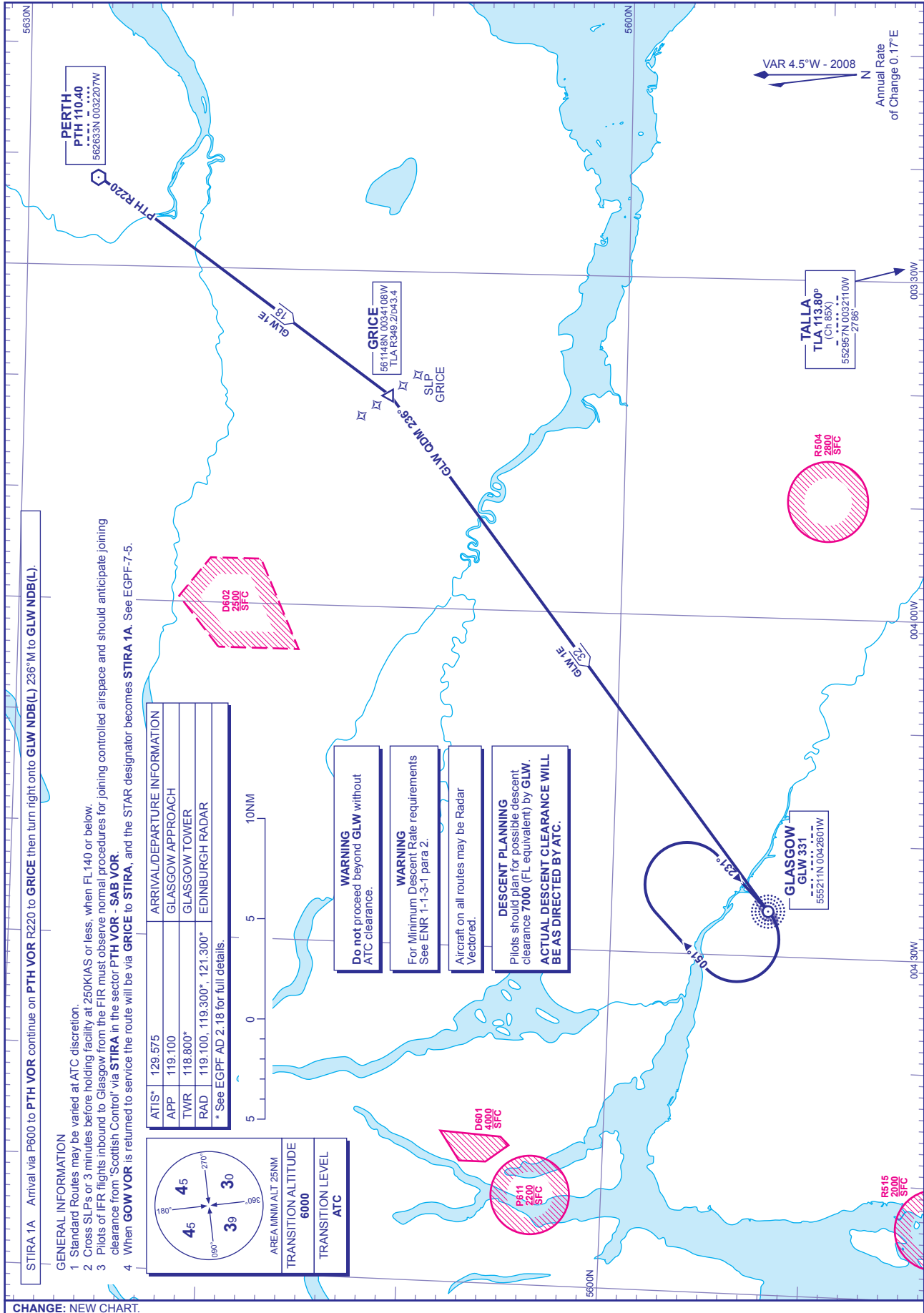


**STANDARD ARRIVAL CHART - INSTRUMENT (STAR) - ICAO**

DISTANCES IN NAUTICAL MILES  
BEARINGS, TRACKS AND RADIALS ARE MAGNETIC  
ALTITUDES AND ELEVATIONS ARE IN FEET

**GLASGOW**  
via NDB(L) GLW VOR GOW u/s



STAR 1A Arrival via P600 to PTH VOR continue on PTH VOR R220 to GRICE then turn right onto GLW NDB(L) 236°M to GLW NDB(L).

- GENERAL INFORMATION**
- Standard Routes may be varied at ATC discretion.
  - Cross SLPs or 3 minutes before holding facility at 250KIAS or less, when FL140 or below.
  - Pilots of IFR flights inbound to Glasgow from the FIR must observe normal procedures for joining controlled airspace and should anticipate joining clearance from 'Scottish Control' via STIRA in the sector PTH VOR - SAB VOR.
  - When GOW VOR is returned to service the route will be via GRICE to STIRA, and the STAR designator becomes STIRA 1A. See EGPF-7-5.

**ARRIVAL/DEPARTURE INFORMATION**

ATIS	129.575
APP	119.100
TWR	118.800*
RAD	119.100, 119.300*, 121.300*

\* See EGPF AD 2.18 for full details.

**ATC**

AREA MIN ALT	25NM
TRANSITION ALTITUDE	6000
TRANSITION LEVEL	

- WARNING**  
Do not proceed beyond GLW without ATC clearance.
- WARNING**  
For Minimum Descent Rate requirements See ENR 1-1-3-1 para 2.
- Aircraft on all routes may be Radar Vected.
- DESCENT PLANNING**  
Pilots should plan for possible descent clearance 7000 (FL equivalent) by GLW. **ACTUAL DESCENT CLEARANCE WILL BE AS DIRECTED BY ATC.**

CHANGE: NEW CHART.  
AERO INFO DATE 26 MAR 08