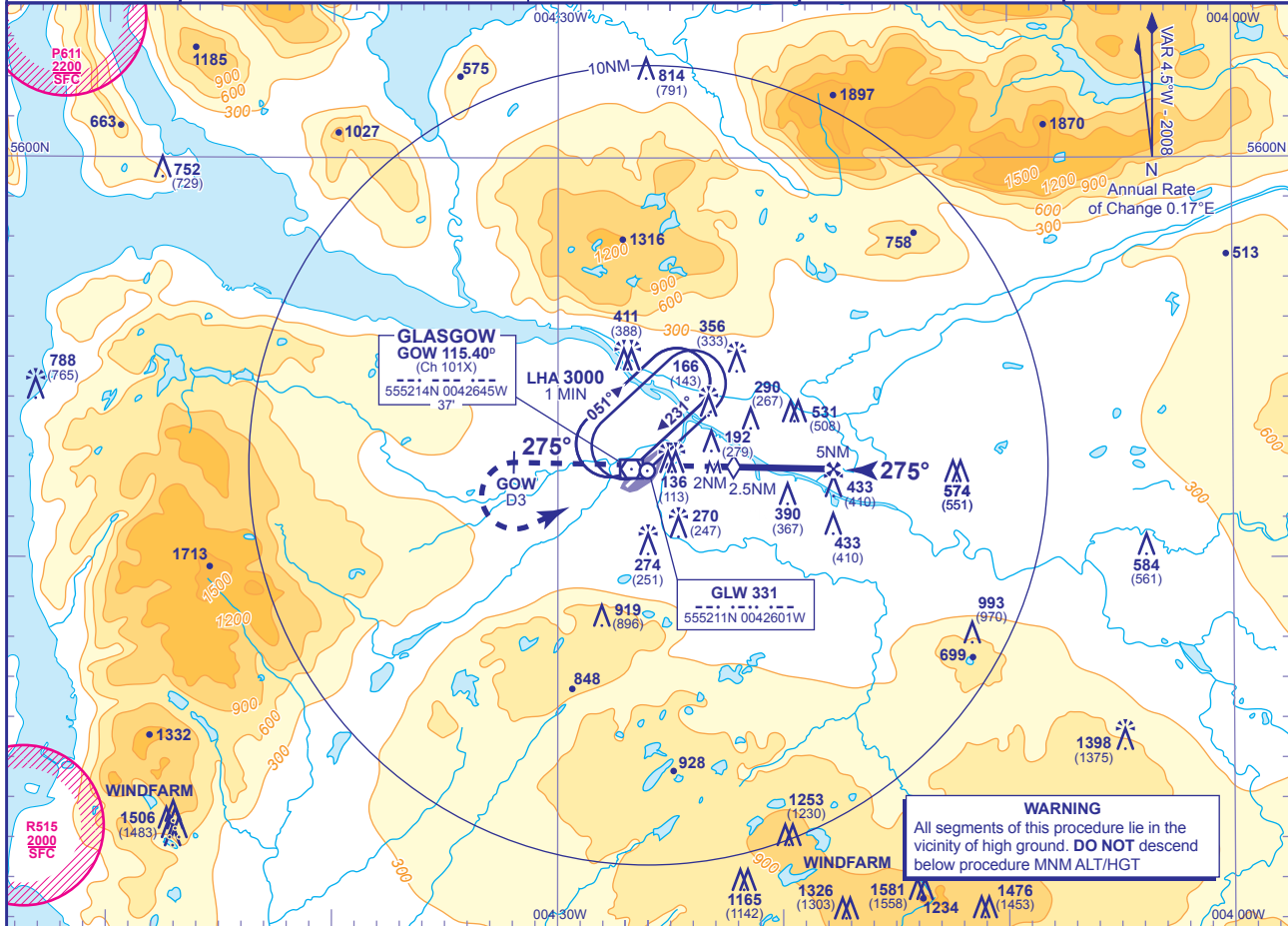


**INSTRUMENT APPROACH CHART - ICAO**

**GLASGOW  
SRA RTR 2NM  
RWY 27  
(ACFT CAT A,B,C)**

	APP	119.100	GLASGOW APPROACH	AD ELEVATION	26	TRANSITION ALTITUDE <b>6000</b>
	TWR	118.800	GLASGOW TOWER	THR ELEVATION	23	
		121.700	GLASGOW GROUND	OBSTACLE ELEVATIONS	814 AMSL (791) (ABOVE THR)	
	RAD	119.100, 119.300, 121.300	GLASGOW RADAR	BEARINGS ARE MAGNETIC		
	ATIS	129.575	GLASGOW INFORMATION			



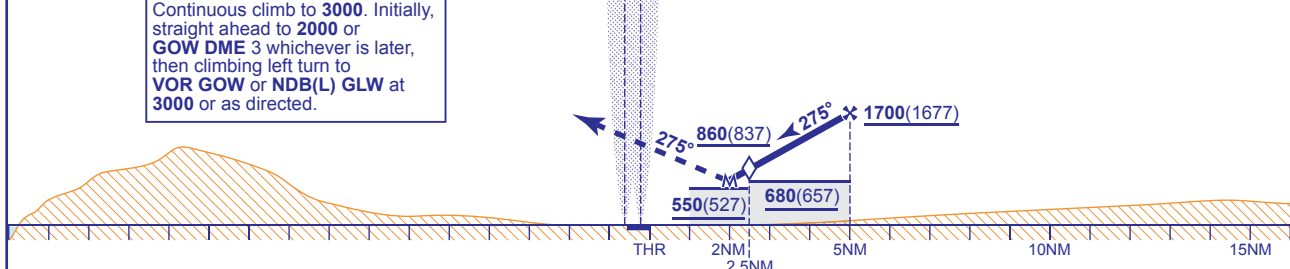
**RADAR ADVISORY HEIGHT** Gradient 5.5%, 336FT/NM

NM	5.0	4.0	3.0	2.0
ALT(HGT)	1700(1677)	1360(1337)	1030(1007)	690(667)

Initial and intermediate approach as directed by radar. (See note 1).

**MAPT RTR 2NM**  
Continuous climb to 3000. Initially, straight ahead to 2000 or GOW DME 3 whichever is later, then climbing left turn to VOR GOW or NDB(L) GLW at 3000 or as directed.

VOR DME GOW NDB(L) GLW



Aircraft Category	A	B	C
OCA (OCH) Procedure	550(527)	550(527)	550(527)
VM(C)OCA (OCH AAL) Total Area	800(774)	800(774)	1400(1374)

Rate of descent	G/S KT	160	140	120	100	80
	FT/MIN	900	780	670	560	450

- NOTE 1** Minimum descent in the intermediate approach area until within 7NM radar range to touchdown is 2000.  
**2** Position overhead holding fixes according to inbound routing as cleared by ATC. The normal cleared altitude at the respective terminal fix is 7000. As this altitude is above the Transition Level, aircraft will be instructed to fly the appropriate flight level.  
**3** Aircraft unable to receive DME advise ATC. Radar ranges will be provided (if required) at GOW DME 3 equivalent in the missed approach.

CHANGE: MAG VAR. FAT. OBSTACLES ADDED.

AERO INFO DATE 20 JUN 08