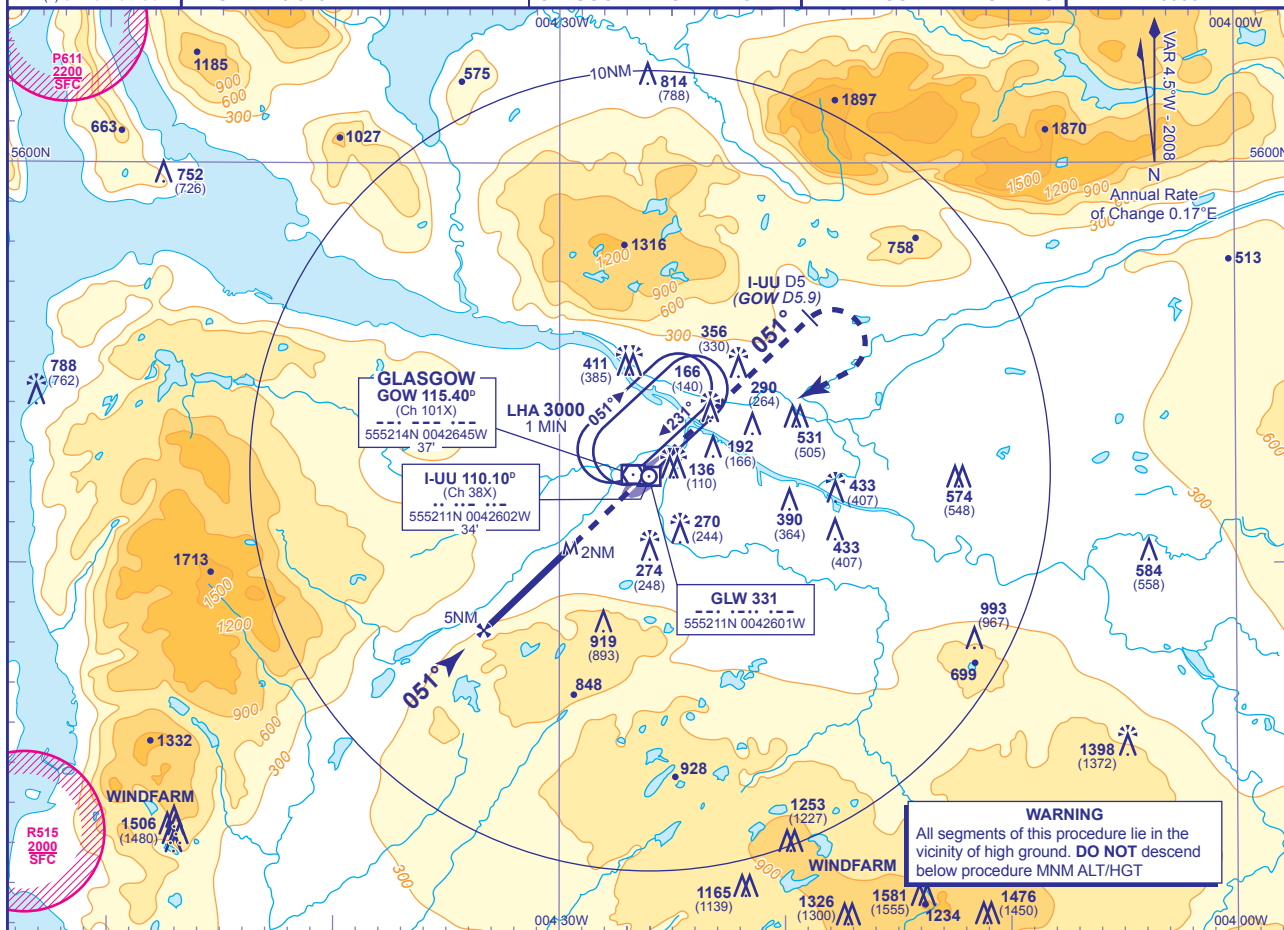


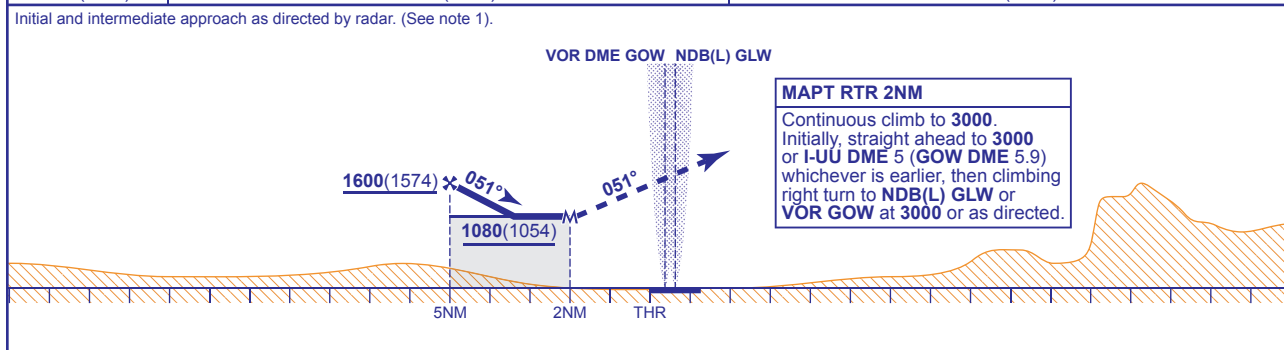
**INSTRUMENT APPROACH CHART - ICAO**

**GLASGOW  
SRA RTR 2NM  
RWY 05**  
(ACFT CAT A,B,C,D)

	APP 119.100	GLASGOW APPROACH	AD ELEVATION 26
	TWR 118.800	GLASGOW TOWER	THR ELEVATION 26
	121.700	GLASGOW GROUND	OBSTACLE ELEVATIONS 814 AMSL (788) (ABOVE THR)
	RAD 119.100, 119.300, 121.300	GLASGOW RADAR	
	ATIS 129.575	GLASGOW INFORMATION	BEARINGS ARE MAGNETIC
NDB(L) GLW or VOR GOW			TRANSITION ALTITUDE <b>6000</b>



<b>RADAR ADVISORY HEIGHTS</b> Gradient 5.19%, 315FT/NM		
NM	5.0	4.0
ALT(HGT)	1600(1574)	1280(1254)



Aircraft Category	A	B	C	D	Rate of descent FT/MIN	G/S KT	160	140	120	100	80
OCA (OCH) Procedure	1080(1054)	1080(1054)	1080(1054)	1080(1054)			840	740	630	530	420
VM(C)OCA (OCH AAL) Total Area	1080(1054)	1080(1054)	1400(1374)	1700(1674)							

**NOTE 1** Minimum descent in the intermediate approach area until with 7NM radar range to touchdown is **2000**.  
**NOTE 2** Position overhead holding fixes according to inbound routing as cleared by ATC. The normal cleared altitude at the respective terminal fix is **7000**. As this altitude is above the Transition Level, aircraft will be instructed to fly the appropriate flight level.  
**NOTE 3** Aircraft unable to receive DME advise ATC. Radar range will be provided (if required) at 5NM in the missed approach.

CHANGE: MAG VAR. OBSTACLES ADDED.

AERO INFO DATE 20 JUN 08