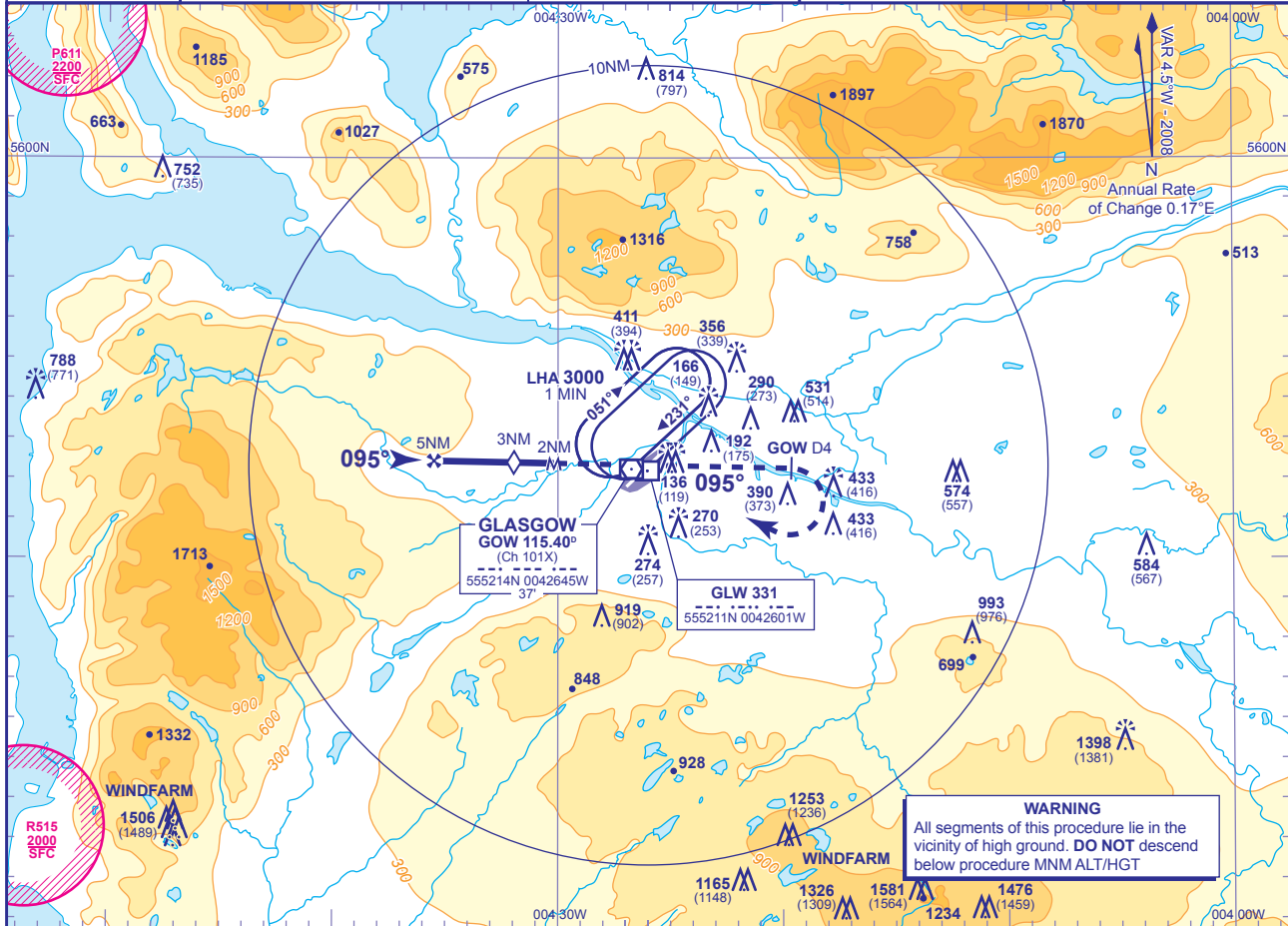


INSTRUMENT APPROACH CHART - ICAO

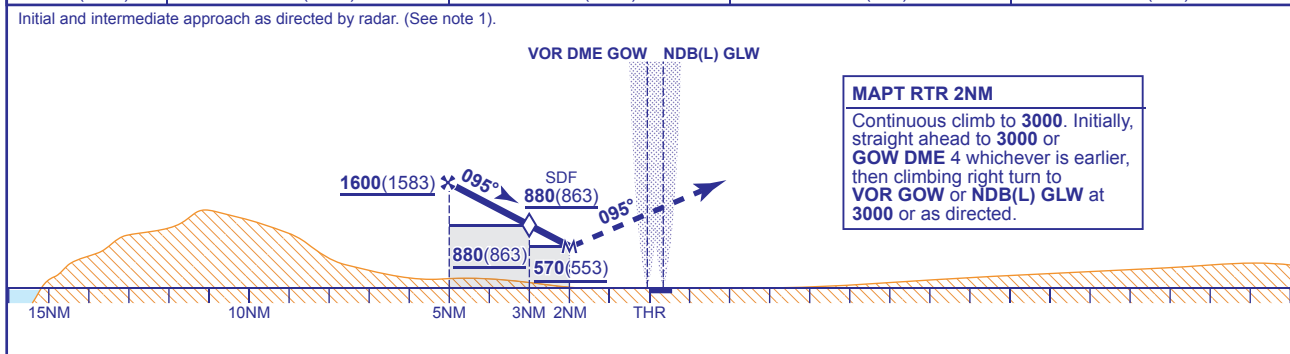
**GLASGOW
SRA RTR
RWY 09**
(ACFT CAT A,B,C)

	APP	119.100	GLASGOW APPROACH	AD ELEVATION	26
	TWR	118.800	GLASGOW TOWER	THR ELEVATION	17
		121.700	GLASGOW GROUND	OBSTACLE ELEVATIONS	814 AMSL (797) (ABOVE THR)
	RAD	119.100, 119.300, 121.300	GLASGOW RADAR	BEARINGS ARE MAGNETIC	
	ATIS	129.575	GLASGOW INFORMATION	TRANSITION ALTITUDE	6000



RADAR ADVISORY HEIGHT Gradient 5.2%, 316FT/NM

NM	5.0	4.0	3.0	2.0
ALT(HGT)	1600(1583)	1280(1263)	970(953)	650(633)



Aircraft Category	A	B	C
OCA (OCH) Procedure	570(553)	570(553)	570(553)
VM(C)OCA (OCH AAL) Total Area	800(774)	800(774)	1400(1374)

Rate of descent	G/S KT	160	140	120	100	80
	FT/MIN	840	740	630	530	420

NOTE 1 Minimum descent in the intermediate approach area until within 7NM radar range to touchdown is 2000.
2 Position overhead holding fixes according to inbound routing as cleared by ATC. The normal cleared altitude at the respective terminal fix is 7000. As this altitude is above the Transition Level, aircraft will be instructed to fly the appropriate flight level.
3 Aircraft unable to receive DME advise ATC. Radar ranges will be provided (if required) at 4NM in the missed approach.

CHANGE: MAG VAR. FAT. OBSTACLES ADDED.

AERO INFO DATE 20 JUN 08