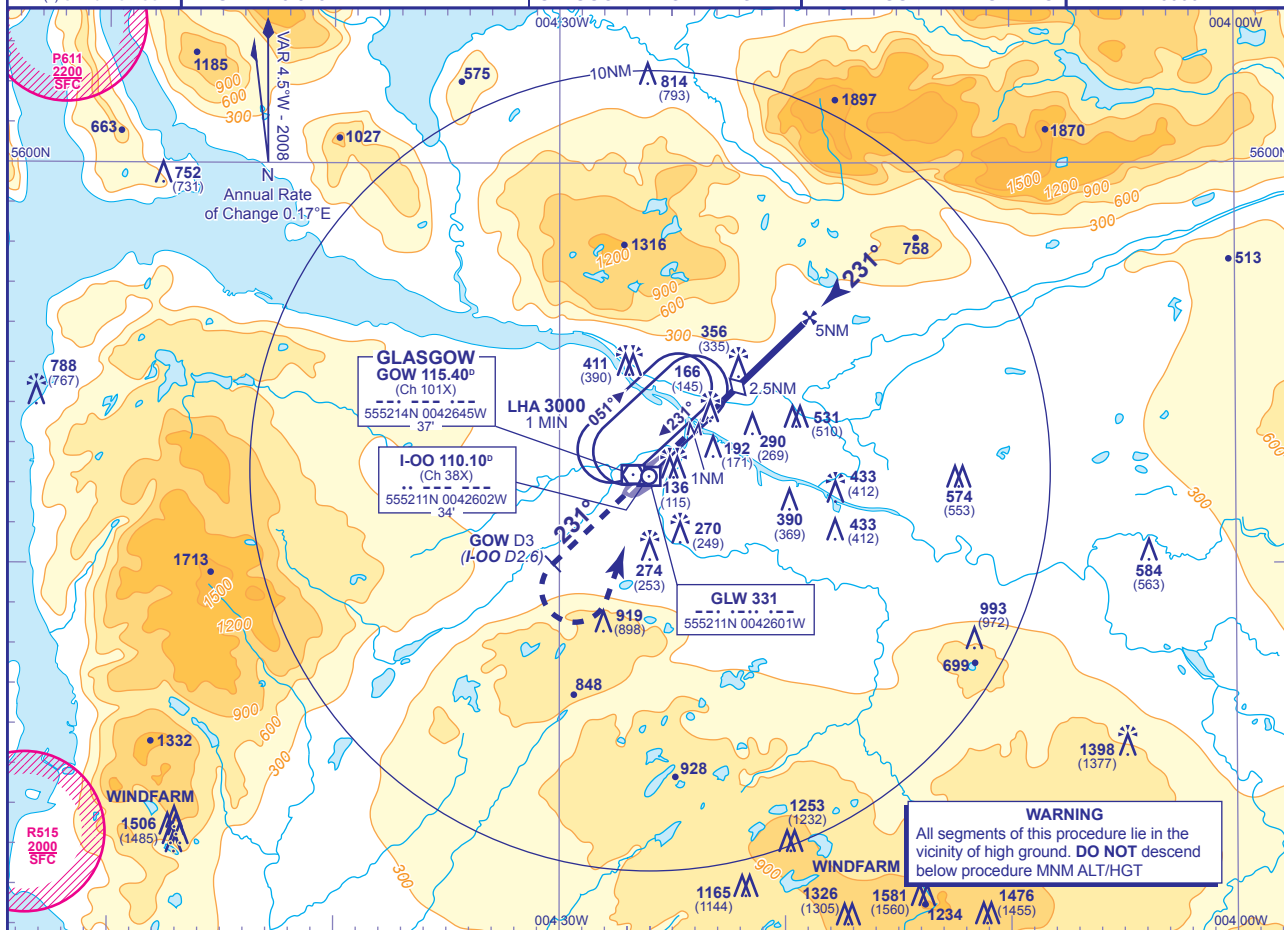


**INSTRUMENT APPROACH CHART - ICAO**

**GLASGOW**  
**SRA RTR 2NM**  
**RWY 23**  
 (ACFT CAT A,B,C,D)

	APP 119.100	GLASGOW APPROACH	AD ELEVATION 26
	TWR 118.800	GLASGOW TOWER	THR ELEVATION 21
	121.700	GLASGOW GROUND	OBSTACLE ELEVATIONS 814 AMSL (793) (ABOVE THR)
	RAD 119.100, 119.300, 121.300	GLASGOW RADAR	
NDB(L) GLW or VOR GOW	ATIS 129.575	GLASGOW INFORMATION	BEARINGS ARE MAGNETIC
			TRANSITION ALTITUDE 6000



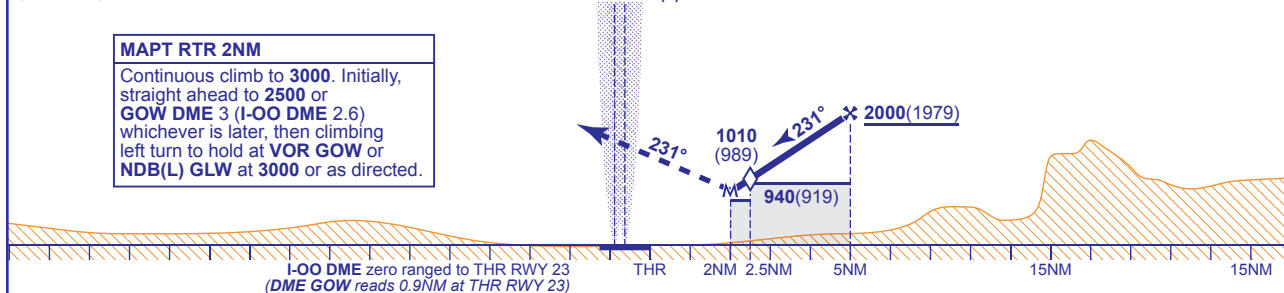
**RADAR ADVISORY HEIGHTS** Gradient 6.5%, 395FT/NM

NM	5.0	4.0	3.0	2.0
ALT(HGT)	2000(1979)	1600(1579)	1210(1189)	810(789)

Initial and intermediate approach as directed by radar (see note 1).

**MAPT RTR 2NM**  
 Continuous climb to 3000. Initially, straight ahead to 2500 or GOW DME 3 (I-OO DME 2.6) whichever is later, then climbing left turn to hold at VOR GOW or NDB(L) GLW at 3000 or as directed.

VOR DME GOW NDB(L) GLW



Aircraft Category		A	B	C	D	Rate of descent	G/S KT	160	140	120	100	80
OCA (OCH)	Procedure	810(789)	810(789)	810(789)	810(789)		FT/MIN	1060	930	790	660	530
VM(C)OCA (OCH AAL)	Total Area	810(784)	810(784)	1400(1374)	1700(1674)							

- NOTE 1** Minimum descent in the intermediate approach area until within 7NM radar range to touchdown is 2000.  
**NOTE 2** Position overhead holding fixes according to inbound routing as cleared by ATC. The normal cleared altitude at the respective terminal fix is 7000. As this altitude is above the Transition Level, aircraft will be instructed to fly the appropriate flight level.  
**NOTE 3** Aircraft unable to receive DME advise ATC. Radar ranges will be provided (if required) at 3NM in the missed approach

CHANGE: MAG VAR. OBSTACLES ADDED.

AERO INFO DATE 20 JUN 08